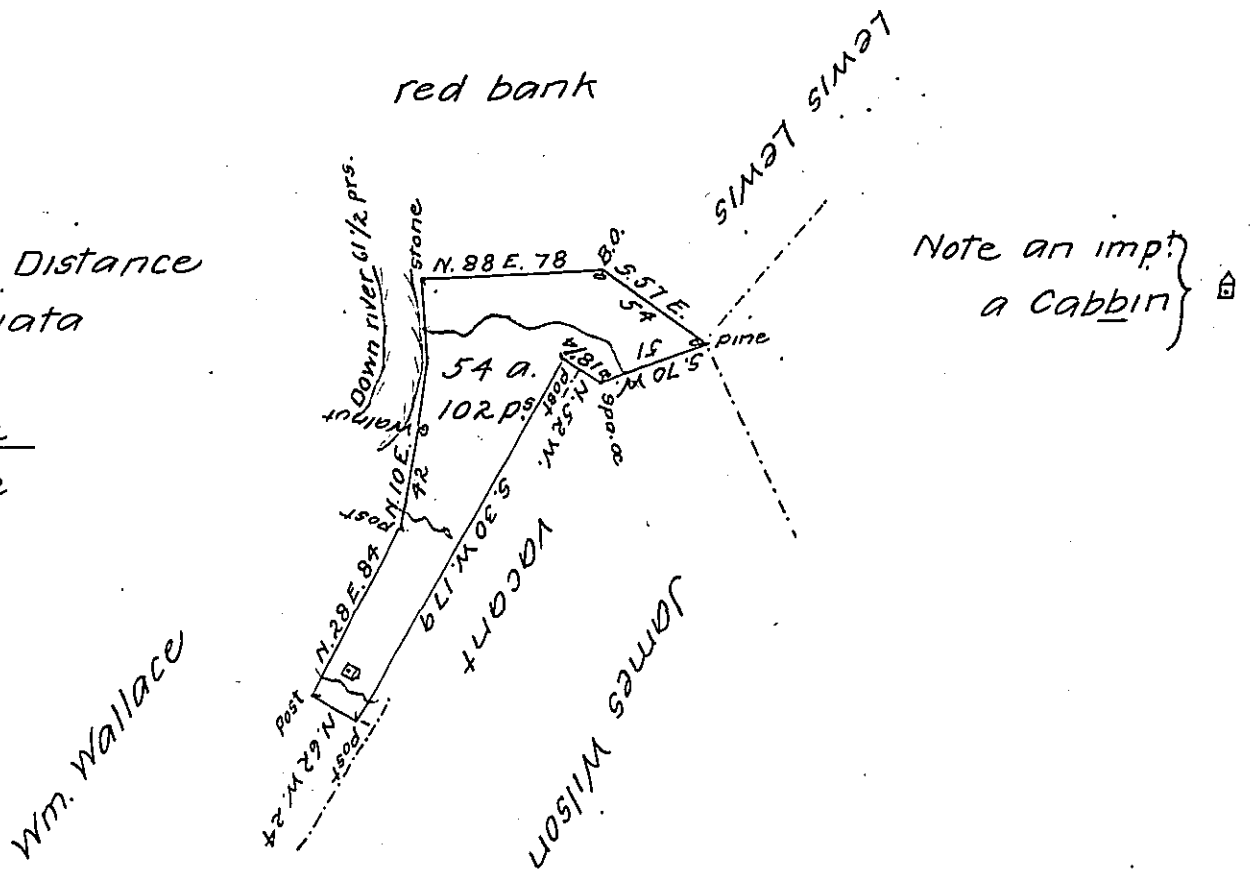


FORM No. 1.

Course & Distance  
 DOWN Juniata  
 N. 10 E. 28  
 N. 3 W. 33 1/2  
 Total 61 1/2



Draught of a Tract of land situate in Wayne Township Mifflin County containing Fifty four acres & 102 perches and the allowance of six pr. Cent for Roads &c appears Survey'd by James Harris late Deputy Surveyor the 17th day of August 1796 In pursuance of a Warrant Granted To Benjamin Brown Dated the 28th day of December 1792 Examined & Corrected the 30th of July 1802

pr. William Harris D.S.

To Samuel Cochran Esquire }  
 Surv<sup>r</sup>. Genl. of Pennsylvania }

IN TESTIMONY that the above is a copy of the original remaining on file in the Department of Internal Affairs of Pennsylvania, made conformably to an Act of Assembly approved the 16th day of February 1833, I have hereunto set my hand and caused the Seal of said Department to be affixed at Harrisburg, this thirty-first day of May 1907

*Henry Horvath*  
 Secretary of Internal Affairs.